

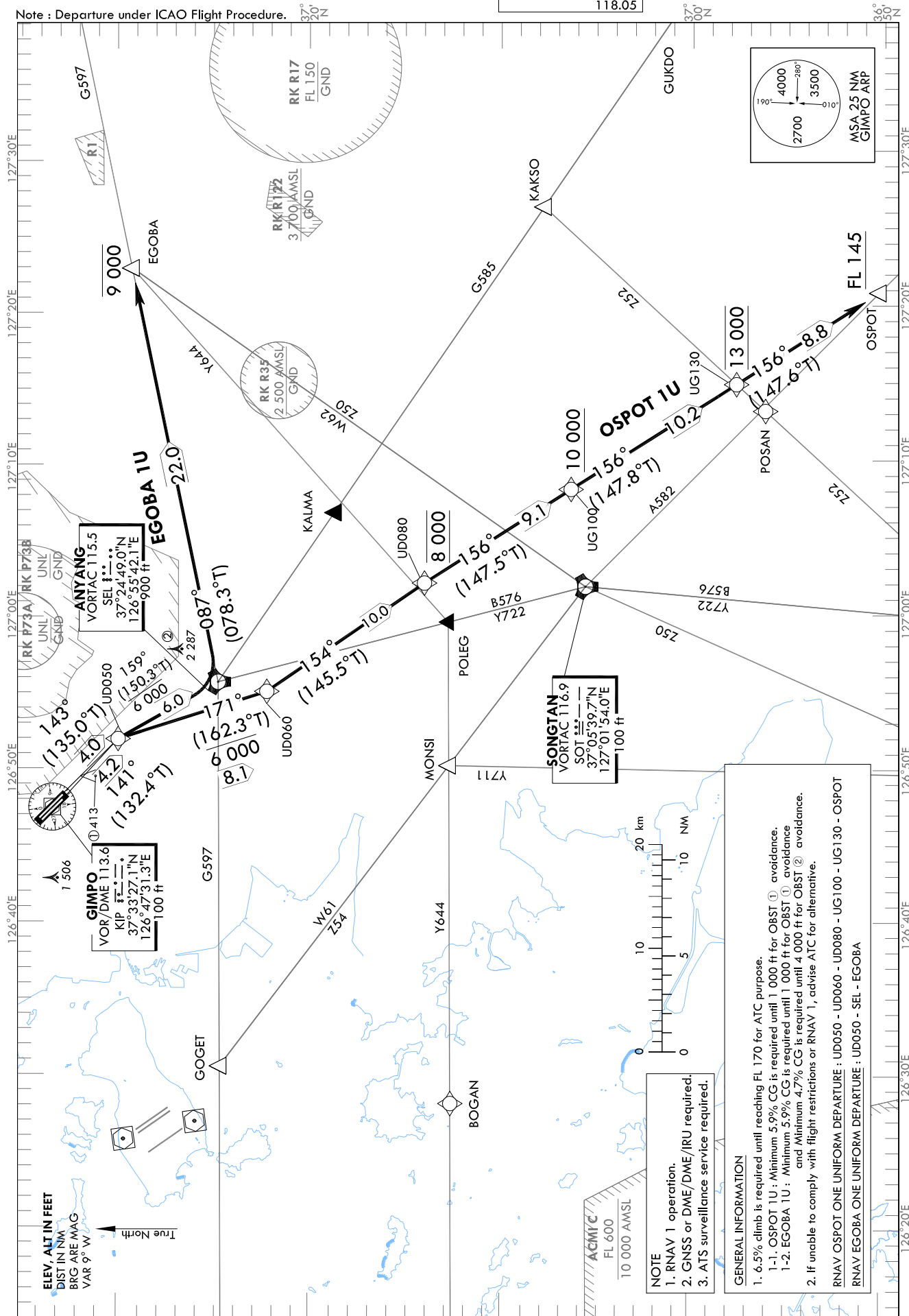
STANDARD DEPARTURE CHART
INSTRUMENT (SID) - ICAO

TRANSITION ALT 14 000
TRANSITION LVL FL 140

SEOUL	DEP	125.15
		121.4
		124.8
GIMPO	TWR	118.1
		118.05

SEOUL/Gimpo Intl(RKSS)
RWY 14L/R
RNAV OSPOT 1U, RNAV EGOBA 1U

Note : Departure under ICAO Flight Procedure.



Change : New procedure.

SEOUL/Gimpo Intl(RKSS)
RWY 14L/R
RNAV OSPOT 1U, RNAV EGOBA 1U

AERONAUTICAL DATA TABULATION

Standard Instrument Departure Procedure Coding Tables

RNAV OSPOT 1U												
Serial Number	Path Descriptor	Waypoint Identifier	Fly-over	Course/Track °M(°T)	Distance (NM)	Turn direction	Altitude (ft)	Speed (kt)	Coordinates	VPA/RDH	Navigation specification	Remarks
001	CF	UD050	-	14L-143(135.0) 14R-141(132.4)	14L-4.0 14R-4.2	R	-	-	37°30'01.9"N 126°51'58.7"E	-	RNAV 1	-
002	TF	UD060	-	171 (162.3)	8.1	-	-6 000	-	37°22'16.6"N 126°55'04.6"E	-	RNAV 1	-
003	TF	UD080	-	154 (145.5)	10.0	-	@8 000	-	37°14'03.3"N 127°02'08.6"E	-	RNAV 1	-
004	TF	UG100	-	156 (147.5)	9.1	-	+10 000	-	37°06'24.1"N 127°08'13.9"E	-	RNAV 1	-
005	TF	UG130	-	156 (147.8)	10.2	-	@13 000	-	36°57'45.7"N 127°15'01.2"E	-	RNAV 1	-
006	TF	OSPOT	-	156 (147.6)	8.8	-	+FL 145	-	36°50'18.1"N 127°20'54.9"E	-	RNAV 1	-

RNAV EGOBA 1U												
Serial Number	Path Descriptor	Waypoint Identifier	Fly-over	Course/Track °M(°T)	Distance (NM)	Turn direction	Altitude (ft)	Speed (kt)	Coordinates	VPA/RDH	Navigation specification	Remarks
001	CF	UD050	-	14L-143(135.0) 14R-141(132.4)	14L-4.0 14R-4.2	R	-	-	37°30'01.9"N 126°51'58.7"E	-	RNAV 1	-
002	TF	SEL	-	159 (150.3)	6.0	-	-6 000	-	37°24'49.0"N 126°55'42.1"E	-	RNAV 1	-
003	TF	EGOBA	-	087 (078.3)	22.0	-	-9 000	-	37°29'14.7"N 127°22'45.9"E	-	RNAV 1	-

Change : New procedure.

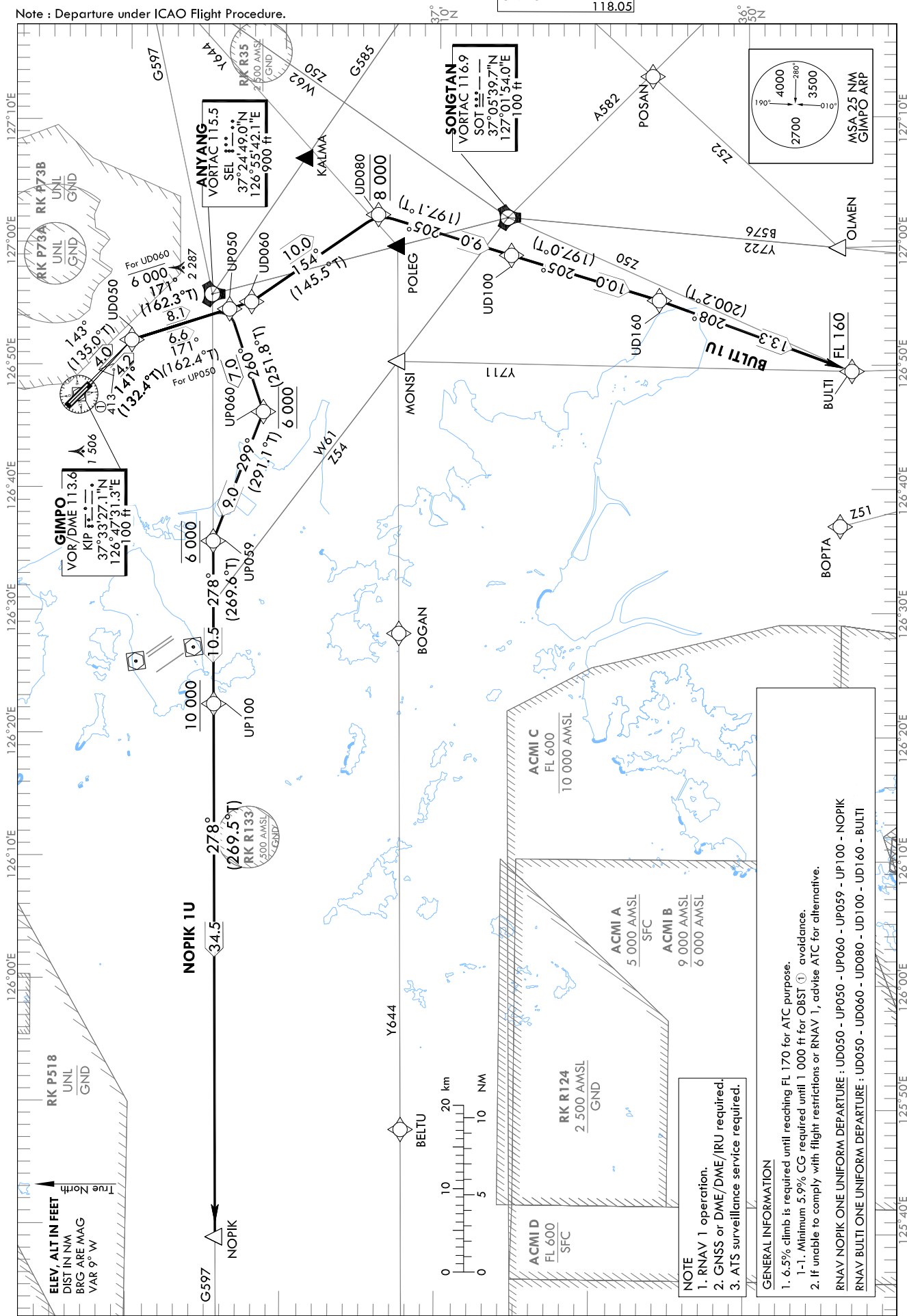
STANDARD DEPARTURE CHART
INSTRUMENT (SID) - ICAO

TRANSITION ALT 14 000
 TRANSITION LVL FL 140

SEOUL DEP 125.15
 121.70
 124.84
 118.05
 GIMPO TWR

SEOUL/Gimpo Intl(RKSS)
 RWY 14L/R
 RNAV NOPIK 1U, RNAV BULTI 1U

Note : Departure under ICAO Flight Procedure.



SEOUL/Gimpo Intl(RKSS)
RWY 14L/R
RNAV NOPIK 1U, RNAV BULTI 1U

AERONAUTICAL DATA TABULATION

Standard Instrument Departure Procedure Coding Tables

RNAV NOPIK 1U												
Serial Number	Path Descriptor	Waypoint Identifier	Fly-over	Course/Track °M(°T)	Distance (NM)	Turn direction	Altitude (ft)	Speed (kt)	Coordinates	VPA/RDH	Navigation specification	Remarks
001	CF	UD050	-	14L-143(135.0) 14R-141(132.4)	14L-4.0 14R-4.2	R	-	-	37°30'01.9"N 126°51'58.7"E	-	RNAV 1	-
002	TF	UP050	-	171 (162.4)	6.6	-	-	-	37°23'42.2"N 126°54'29.3"E	-	RNAV 1	-
003	TF	UP060	-	260 (251.8)	7.0	-	@6 000	-	37°21'30.5"N 126°46'08.9"E	-	RNAV 1	-
004	TF	UP059	-	299 (291.1)	9.0	-	@6 000	-	37°24'43.8"N 126°35'37.7"E	-	RNAV 1	-
005	TF	UP100	-	278 (269.6)	10.5	-	+10 000	-	37°24'38.7"N 126°22'23.8"E	-	RNAV 1	-
006	TF	NOPIK	-	278 (269.5)	34.5	-	-	-	37°24'12.0"N 125°39'05.0"E	-	RNAV 1	-

RNAV BULTI 1U												
Serial Number	Path Descriptor	Waypoint Identifier	Fly-over	Course/Track °M(°T)	Distance (NM)	Turn direction	Altitude (ft)	Speed (kt)	Coordinates	VPA/RDH	Navigation specification	Remarks
001	CF	UD050	-	14L-143(135.0) 14R-141(132.4)	14L-4.0 14R-4.2	R	-	-	37°30'01.9"N 126°51'58.7"E	-	RNAV 1	-
002	TF	UD060	-	171 (162.3)	8.1	-	-6 000	-	37°22'16.6"N 126°55'04.6"E	-	RNAV 1	-
003	TF	UD080	-	154 (145.5)	10.0	-	@8 000	-	37°14'03.3"N 127°02'08.6"E	-	RNAV 1	-
004	TF	UD100	-	205 (197.1)	9.0	-	-	-	37°05'26.4"N 126°58'50.5"E	-	RNAV 1	-
005	TF	UD160	-	205 (197.0)	10.0	-	-	-	36°55'51.6"N 126°55'11.3"E	-	RNAV 1	-
006	TF	BULTI	-	208 (200.2)	13.3	-	@FL 160	-	36°43'22.3"N 126°49'29.7"E	-	RNAV 1	-

Change : New procedure.

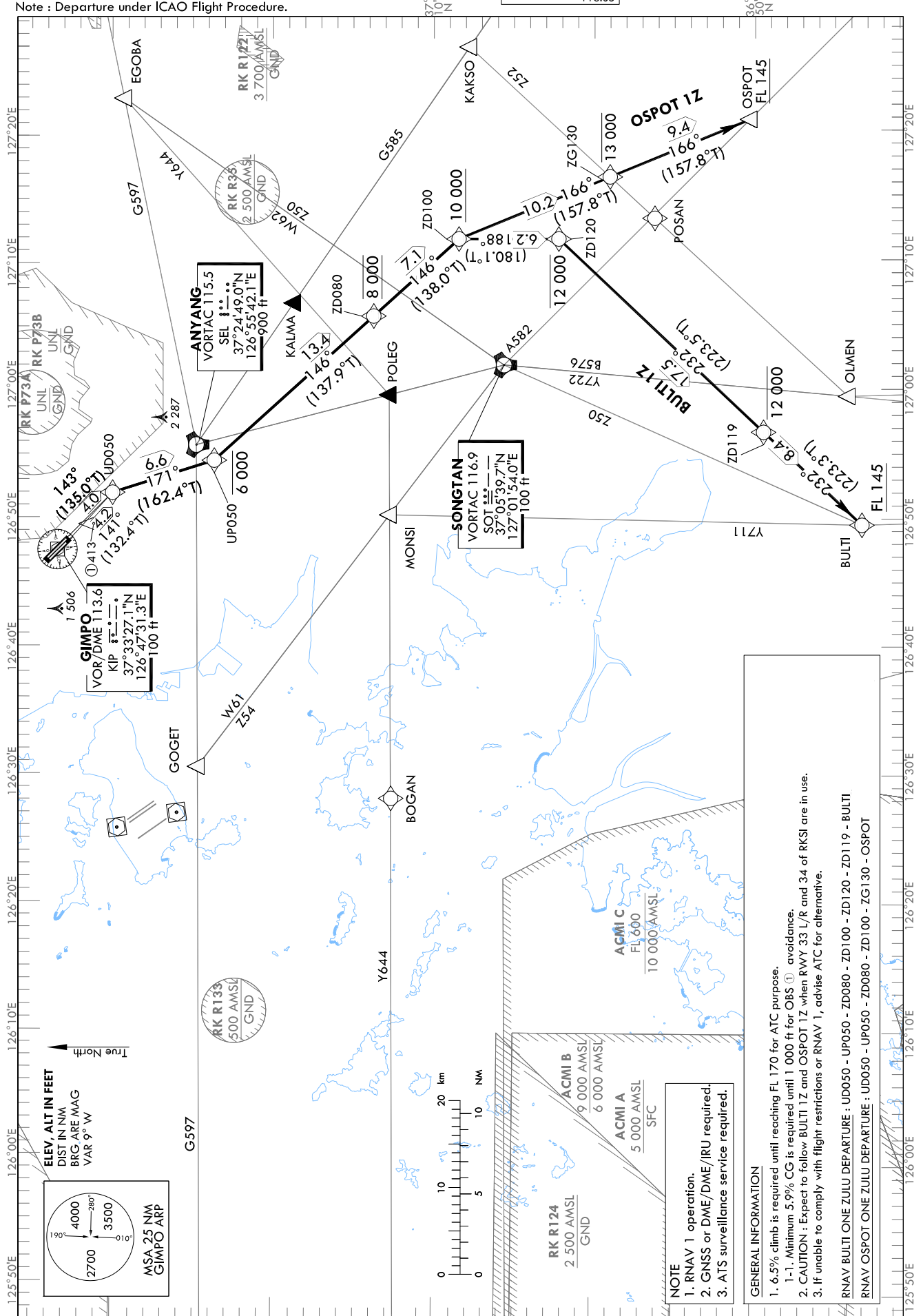
STANDARD DEPARTURE CHART
INSTRUMENT (SID) - ICAO

TRANSITION ALT 14 000
TRANSITION LVL FL 140

SEOUL DEP	125.15
	121.4
	124.8
GIMPO TWR	118.1
	118.05

SEOUL/Gimpo Intl(RKSS)
RWY 14L/R
RNAV BULTI 1Z, RNAV OSPOT 1Z

Note : Departure under ICAO Flight Procedure.



Change : New procedure.

SEOUL/Gimpo Intl(RKSS)
RWY 14L/R
RNAV BULTI 1Z, RNAV OSPOT 1Z

AERONAUTICAL DATA TABULATION

Standard Instrument Departure Procedure Coding Tables

RNAV BULTI 1Z												
Serial Number	Path Descriptor	Waypoint Identifier	Fly-over	Course/Track °M(°T)	Distance (NM)	Turn direction	Altitude (ft)	Speed (kt)	Coordinates	VPA/RDH	Navigation specification	Remarks
001	CF	UD050	-	14L-143(135.0) 14R-141(132.4)	14L-4.0 14R-4.2	R	-	-	37°30'01.9"N 126°51'58.7"E	-	RNAV 1	-
002	TF	UP050	-	171 (162.4)	6.6	-	-6 000	-	37°23'42.2"N 126°54'29.3"E	-	RNAV 1	-
003	TF	ZD080	-	146 (137.9)	13.4	-	@8 000	-	37°13'46.2"N 127°05'43.1"E	-	RNAV 1	-
004	TF	ZD100	-	146 (138.0)	7.1	-	+10 000	-	37°08'27.2"N 127°11'42.1"E	-	RNAV 1	-
005	TF	ZD120	-	188 (180.1)	6.2	-	-12 000	-	37°02'14.2"N 127°11'41.1"E	-	RNAV 1	-
006	TF	ZD119	-	232 (223.5)	17.5	-	-12 000	-	36°49'30.3"N 126°56'40.8"E	-	RNAV 1	-
007	TF	BULTI	-	232 (223.3)	8.4	-	+FL 145	-	36°43'22.3"N 126°49'29.7"E	-	RNAV 1	-

RNAV OSPOT 1Z												
Serial Number	Path Descriptor	Waypoint Identifier	Fly-over	Course/Track °M(°T)	Distance (NM)	Turn direction	Altitude (ft)	Speed (kt)	Coordinates	VPA/RDH	Navigation specification	Remarks
001	CF	UD050	-	14L-143(135.0) 14R-141(132.4)	14L-4.0 14R-4.2	R	-	-	37°30'01.9"N 126°51'58.7"E	-	RNAV 1	-
002	TF	UP050	-	171 (162.4)	6.6	-	-6 000	-	37°23'42.2"N 126°54'29.3"E	-	RNAV 1	-
003	TF	ZD080	-	146 (137.9)	13.4	-	@8 000	-	37°13'46.2"N 127°05'43.1"E	-	RNAV 1	-
004	TF	ZD100	-	146 (138.0)	7.1	-	+10 000	-	37°08'27.2"N 127°11'42.1"E	-	RNAV 1	-
005	TF	ZG130	-	166 (157.8)	10.2	-	-13 000	-	36°59'01.9"N 127°16'29.6"E	-	RNAV 1	-
006	TF	OSPOT	-	166 (157.8)	9.4	-	+FL 145	-	36°50'18.1"N 127°20'54.9"E	-	RNAV 1	-

Change : New procedure.

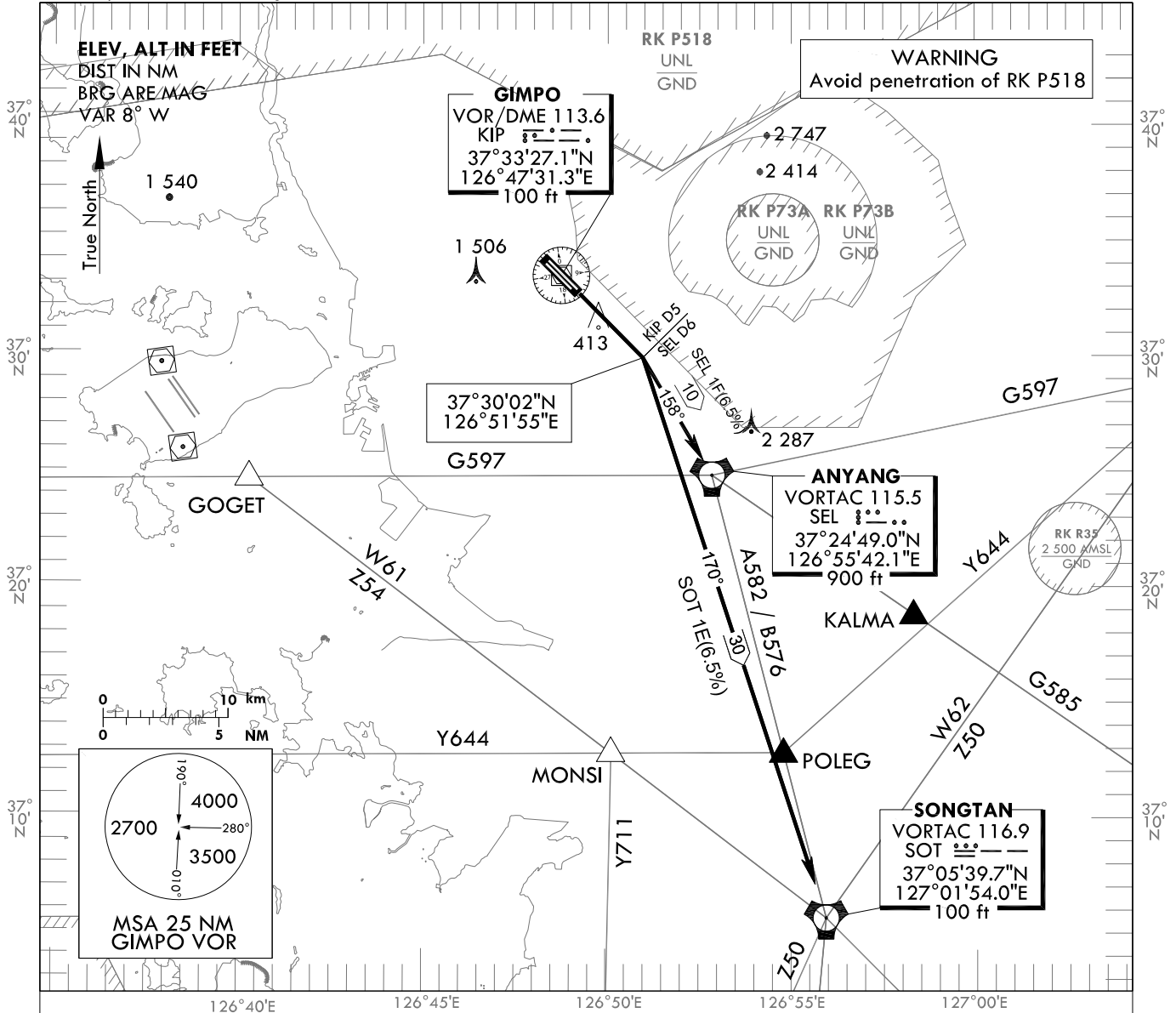
**STANDARD DEPARTURE CHART
INSTRUMENT (SID) - ICAO**

TRANSITION ALT 14 000
TRANSITION LVL FL 140

SEOUL DEP	125.15
	121.4
	124.8
GIMPO TWR	118.1
	118.05

SEOUL/Gimpo Intl(RKSS)
RWY 14L/R
SEL 1F, SOT 1E

Note : Departure under ICAO Flight Procedures.



GENERAL INFORMATION

1. 6.5% CG necessary for Airspace and ATC purpose and 5.0% for avoiding OBST.
2. If unable to comply with flight restrictions, advise ATC well before departure.
3. Stepped climb : Due to interaction with other routes.

SEL(ANYANG) ONE FOXTROT DEPARTURE :

TAKE OFF RWY 14L/R : Direct R 143 KIP/D5(if KIP not available , climb on runway heading) turn RIGHT to intercept R 338 SEL and proceed to SEL Cross SEL at or above 4 000 ft.
Maintain 6 000 ft until instructed by ATC.
- For airway B576 or A582, cross 4DME south of SEL at or above 5 000 ft
SOT at or above 11 000 ft, 8DME south of SOT at or above FL 150 unless cleared by ATC.
- For airway G597 cross EGOBA at or above 8 000 ft unless cleared by ATC.

SOT(SONGTAN) ONE ECHO DEPARTURE :

TAKE OFF RWY 14L/R : Direct R 143 KIP/D5(if KIP not available , climb on runway heading) turn RIGHT to intercept R 350 SOT and proceed to SOT. Maintain 6 000 ft until instructed by ATC.

Change : Amended radial format.

INTENTIONALLY

LEFT

BLANK

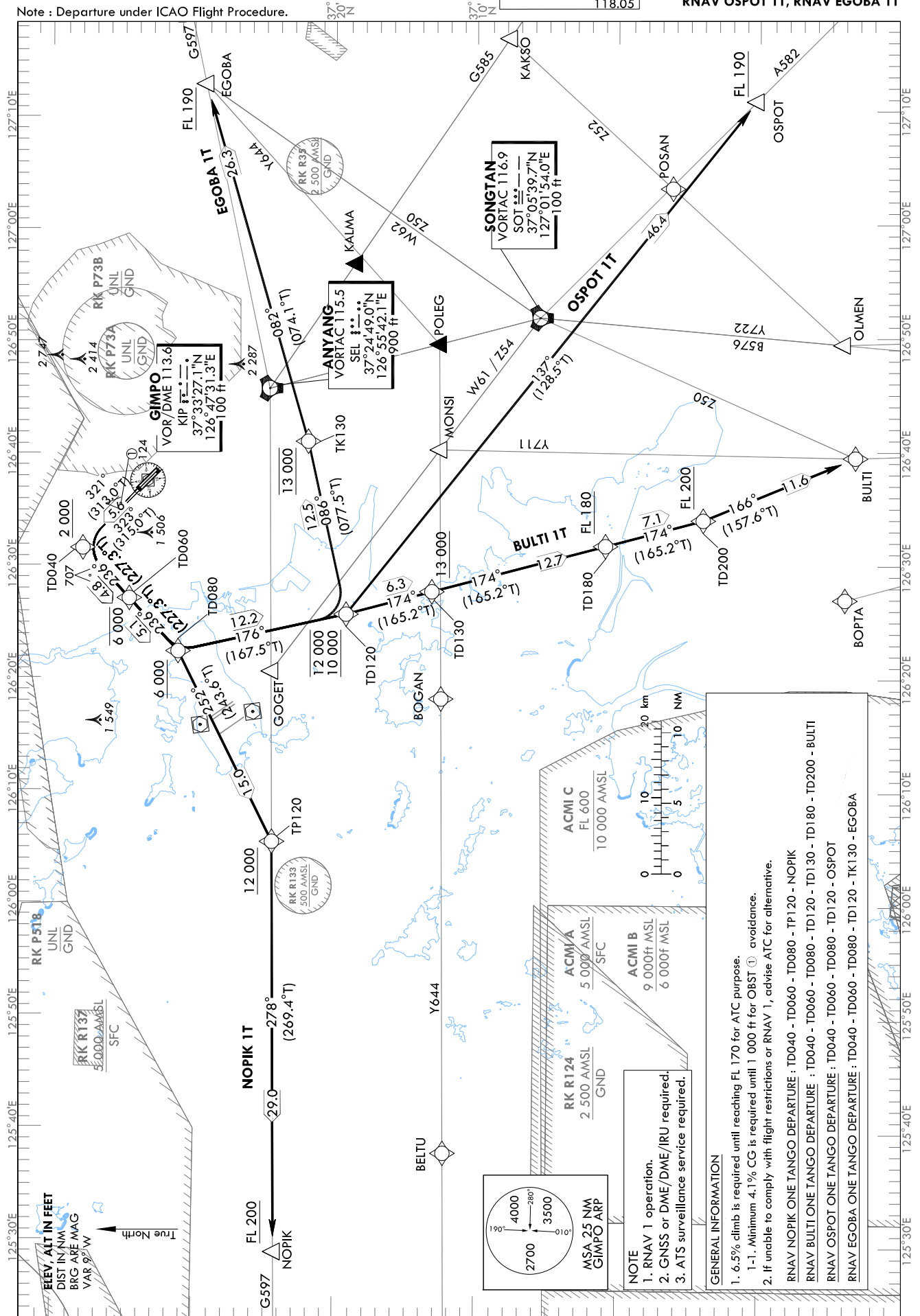
STANDARD DEPARTURE CHART
INSTRUMENT (SID) - ICAO

TRANSITION ALT 14 000
TRANSITION LVL FL 140

SEOUL DEP	125.15
	124.14
	123.18
GIMPO TWR	118.05

SEOUL/Gimpo Intl(RKSS)
RWY 32L/R
RNAV NOPIK 1T, RNAV BULTI 1T
RNAV OSPOT 1T, RNAV EGOBA 1T

Note : Departure under ICAO Flight Procedure.



Change : New procedure.

SEOUL/Gimpo Intl(RKSS)
RWY 32L/R
RNAV NOPIK 1T, RNAV BULTI 1T

AERONAUTICAL DATA TABULATION

Standard Instrument Departure Procedure Coding Tables

RNAV NOPIK 1T

Serial Number	Path Descriptor	Waypoint Identifier	Fly-over	Course/Track °M(°T)	Distance (NM)	Turn direction	Altitude (ft)	Speed (kt)	Coordinates	VPA/RDH	Navigation specification	Remarks
001	CF	TD040	-	32L-323(315.0) 32R-321(313.0)	5.6	L	+2 000	-	37°38'03.0"N 126°41'33.7"E	-	RNAV 1	-
002	TF	TD060	-	236 (227.3)	4.8	-	-6 000	-	37°34'45.5"N 126°37'04.7"E	-	RNAV 1	-
003	TF	TD080	-	236 (227.3)	5.1	-	+6 000	-	37°31'17.7"N 126°32'22.3"E	-	RNAV 1	-
004	TF	TP120	-	252 (243.6)	15.0	-	+12 000	-	37°24'35.5"N 126°15'29.3"E	-	RNAV 1	-
005	TF	NOPIK	-	278 (269.4)	29.0	-	+FL 200	-	37°24'12.0"N 125°39'05.0"E	-	RNAV 1	-

RNAV BULTI 1T

Serial Number	Path Descriptor	Waypoint Identifier	Fly-over	Course/Track °M(°T)	Distance (NM)	Turn direction	Altitude (ft)	Speed (kt)	Coordinates	VPA/RDH	Navigation specification	Remarks
001	CF	TD040	-	32L-323(315.0) 32R-321(313.0)	5.6	L	+2 000	-	37°38'03.0"N 126°41'33.7"E	-	RNAV 1	-
002	TF	TD060	-	236 (227.3)	4.8	-	-6 000	-	37°34'45.5"N 126°37'04.7"E	-	RNAV 1	-
003	TF	TD080	-	236 (227.3)	5.1	-	+6 000	-	37°31'17.7"N 126°32'22.3"E	-	RNAV 1	-
004	TF	TD120	-	176 (167.5)	12.2	-	-12 000 +10 000	-	37°19'24.8"N 126°35'40.7"E	-	RNAV 1	-
005	TF	TD130	-	174 (165.2)	6.3	-	+13 000	-	37°13'20.6"N 126°37'40.9"E	-	RNAV 1	-
006	TF	TD180	-	174 (165.2)	12.7	-	+FL 180	-	37°01'03.4"N 126°41'43.1"E	-	RNAV 1	-
007	TF	TD200	-	174 (165.2)	7.1	-	+FL 200	-	36°54'08.6"N 126°43'59.3"E	-	RNAV 1	-
008	TF	BULTI	-	166 (157.6)	11.6	-	-	-	36°43'22.3"N 126°49'29.7"E	-	RNAV 1	-

Change : New procedure.

SEOUL/Gimpo Intl(RKSS)
RWY 32L/R
RNAV OSPOT 1T, RNAV EGOBA 1T

AERONAUTICAL DATA TABULATION

Standard Instrument Departure Procedure Coding Tables

RNAV OSPOT 1T												
Serial Number	Path Descriptor	Waypoint Identifier	Fly-over	Course/Track °M(°T)	Distance (NM)	Turn direction	Altitude (ft)	Speed (kt)	Coordinates	VPA/RDH	Navigation specification	Remarks
001	CF	TD040	-	32L-323(315.0) 32R-321(313.0)	5.6	L	+2 000	-	37°38'03.0"N 126°41'33.7"E	-	RNAV 1	-
002	TF	TD060	-	236 (227.3)	4.8	-	-6 000	-	37°34'45.5"N 126°37'04.7"E	-	RNAV 1	-
003	TF	TD080	-	236 (227.3)	5.1	-	+6 000	-	37°31'17.7"N 126°32'22.3"E	-	RNAV 1	-
004	TF	TD120	-	176 (167.5)	12.2	-	-12 000 +10 000	-	37°19'24.8"N 126°35'40.7"E	-	RNAV 1	-
005	TF	OSPOT	-	137 (128.5)	46.4	-	+FL 190	-	36°50'18.1"N 127°20'54.9"E	-	RNAV 1	-

RNAV EGOBA 1T												
Serial Number	Path Descriptor	Waypoint Identifier	Fly-over	Course/Track °M(°T)	Distance (NM)	Turn direction	Altitude (ft)	Speed (kt)	Coordinates	VPA/RDH	Navigation specification	Remarks
001	CF	TD040	-	32L-323(315.0) 32R-321(313.0)	5.6	L	+2 000	-	37°38'03.0"N 126°41'33.7"E	-	RNAV 1	-
002	TF	TD060	-	236 (227.3)	4.8	-	-6 000	-	37°34'45.5"N 126°37'04.7"E	-	RNAV 1	-
003	TF	TD080	-	236 (227.3)	5.1	-	+6 000	-	37°31'17.7"N 126°32'22.3"E	-	RNAV 1	-
004	TF	TD120	-	176 (167.5)	12.2	-	-12 000 +10 000	-	37°19'24.8"N 126°35'40.7"E	-	RNAV 1	-
005	TF	TK130	-	086 (077.5)	12.5	-	@13 000	-	37°22'05.9"N 126°51'00.0"E	-	RNAV 1	-
006	TF	EGOBA	-	082 (074.1)	26.3	-	+FL 190	-	37°29'14.7"N 127°22'45.9"E	-	RNAV 1	-

Change : New procedure.

INTENTIONALLY

LEFT

BLANK

SEOUL/Gimpo Int'l(RKSS)
RWY 32L/R
RNAV NOPIK 1Q, RNAV BULTI 1Q

AERONAUTICAL DATA TABULATION

Standard Instrument Departure Procedure Coding Tables

Serial Number	Path Descriptor	Waypoint Identifier	Fly-over	Course/Track °M(°T)	Distance (NM)	Turn direction	Altitude (ft)	Speed (kt)	Coordinates	VPA/RDH	Navigation specification	Remarks
001	CF	QD040	-	32L-323(315.0) 32R-321(313.0)	5.6	L	+2 000	-	37°38'03.0"N 126°41'33.7"E	-	RNAV 1	-
002	TF	QD050	-	236 (227.3)	4.8	-	-5 000	-	37°34'45.5"N 126°37'04.7"E	-	RNAV 1	-
003	TF	QD080	-	236 (227.3)	5.1	-	-8 000 +6 000	-	37°31'17.7"N 126°32'22.3"E	-	RNAV 1	-
004	TF	QP080	-	252 (243.6)	5.0	-	-8 000 +7 000	-	37°29'04.1"N 126°26'44.7"E	-	RNAV 1	-
005	TF	QP120	-	252 (243.6)	10.0	-	+12 000	-	37°24'35.5"N 126°15'29.3"E	-	RNAV 1	-
006	TF	NOPIK	-	278 (269.4)	29.0	-	+FL 200	-	37°24'12.0"N 125°39'05.0"E	-	RNAV 1	-

Serial Number	Path Descriptor	Waypoint Identifier	Fly-over	Course/Track °M(°T)	Distance (NM)	Turn direction	Altitude (ft)	Speed (kt)	Coordinates	VPA/RDH	Navigation specification	Remarks
001	CF	QD040	-	32L-323(315.0) 32R-321(313.0)	5.6	L	+2 000	-	37°38'03.0"N 126°41'33.7"E	-	RNAV 1	-
002	TF	QD050	-	236 (227.3)	4.8	-	-5 000	-	37°34'45.5"N 126°37'04.7"E	-	RNAV 1	-
003	TF	QD080	-	236 (227.3)	5.1	-	-8 000 +6 000	-	37°31'17.7"N 126°32'22.3"E	-	RNAV 1	-
004	TF	QD090	-	175 (166.3)	9.2	-	@9 000	-	37°22'18.4"N 126°35'07.0"E	-	RNAV 1	-
005	TF	QD110	-	169 (160.9)	6.4	-	@11 000	-	37°16'16.3"N 126°37'43.8"E	-	RNAV 1	-
006	TF	QD150	-	155 (146.7)	16.3	-	-	-	37°02'39.6"N 126°48'52.6"E	-	RNAV 1	-
007	TF	QD160	-	187 (178.5)	9.3	-	-	-	36°53'22.9"N 126°49'10.5"E	-	RNAV 1	-
008	TF	BULTI	-	187 (178.5)	10.0	-	@FL 160	-	36°43'22.3"N 126°49'29.7"E	-	RNAV 1	-

Change : New procedure.

SEOUL/Gimpo Intl(RKSS)
RWY 32L/R
RNAV OSPOT 1Q, RNAV EGOBA 1Q

AERONAUTICAL DATA TABULATION

Standard Instrument Departure Procedure Coding Tables

RNAV OSPOT 1Q												
Serial Number	Path Descriptor	Waypoint Identifier	Fly-over	Course/Track °M(T)	Distance (NM)	Turn direction	Altitude (ft)	Speed (kt)	Coordinates	VPA/RDH	Navigation specification	Remarks
001	CF	QD040	-	32L-323(315.0) 32R-321(313.0)	5.6	L	+2 000	-	37°38'03.0"N 126°41'33.7"E	-	RNAV 1	-
002	TF	QD050	-	236 (227.3)	4.8	-	-5 000	-	37°34'45.5"N 126°37'04.7"E	-	RNAV 1	-
003	TF	QD080	-	236 (227.3)	5.1	-	-8 000 +6 000	-	37°31'17.7"N 126°32'22.3"E	-	RNAV 1	-
004	TF	QD090	-	175 (166.3)	9.2	-	@9 000	-	37°22'18.4"N 126°35'07.0"E	-	RNAV 1	-
005	TF	QD110	-	169 (160.9)	6.4	-	@11 000	-	37°16'16.3"N 126°37'43.8"E	-	RNAV 1	-
006	TF	QD150	-	155 (146.7)	16.3	-	-	-	37°02'39.6"N 126°48'52.6"E	-	RNAV 1	-
007	TF	QG180	-	121 (113.1)	18.2	-	+FL 180	-	36°55'29.2"N 127°09'43.6"E	-	RNAV 1	-
008	TF	OSPOT	-	128 (119.9)	10.4	-	-	-	36°50'18.1"N 127°20'54.9"E	-	RNAV 1	-

RNAV EGOBA 1Q												
Serial Number	Path Descriptor	Waypoint Identifier	Fly-over	Course/Track °M(T)	Distance (NM)	Turn direction	Altitude (ft)	Speed (kt)	Coordinates	VPA/RDH	Navigation specification	Remarks
001	CF	QD040	-	32L-323(315.0) 32R-321(313.0)	5.6	L	+2 000	-	37°38'03.0"N 126°41'33.7"E	-	RNAV 1	-
002	TF	QD050	-	236 (227.3)	4.8	-	-5 000	-	37°34'45.5"N 126°37'04.7"E	-	RNAV 1	-
003	TF	QD080	-	236 (227.3)	5.1	-	-8 000 +6 000	-	37°31'17.7"N 126°32'22.3"E	-	RNAV 1	-
004	TF	QK080	-	146 (137.2)	8.9	-	-8 000 +7 000	-	37°24'45.2"N 126°39'57.2"E	-	RNAV 1	-
005	TF	SEL	-	098 (089.6)	12.5	-	@9 000	-	37°24'49.0"N 126°55'42.1"E	-	RNAV 1	-
006	TF	EGOBA	-	087 (078.3)	22.0	-	@9 000	-	37°29'14.7"N 127°22'45.9"E	-	RNAV 1	-

Change : New procedure.

INTENTIONALLY

LEFT

BLANK

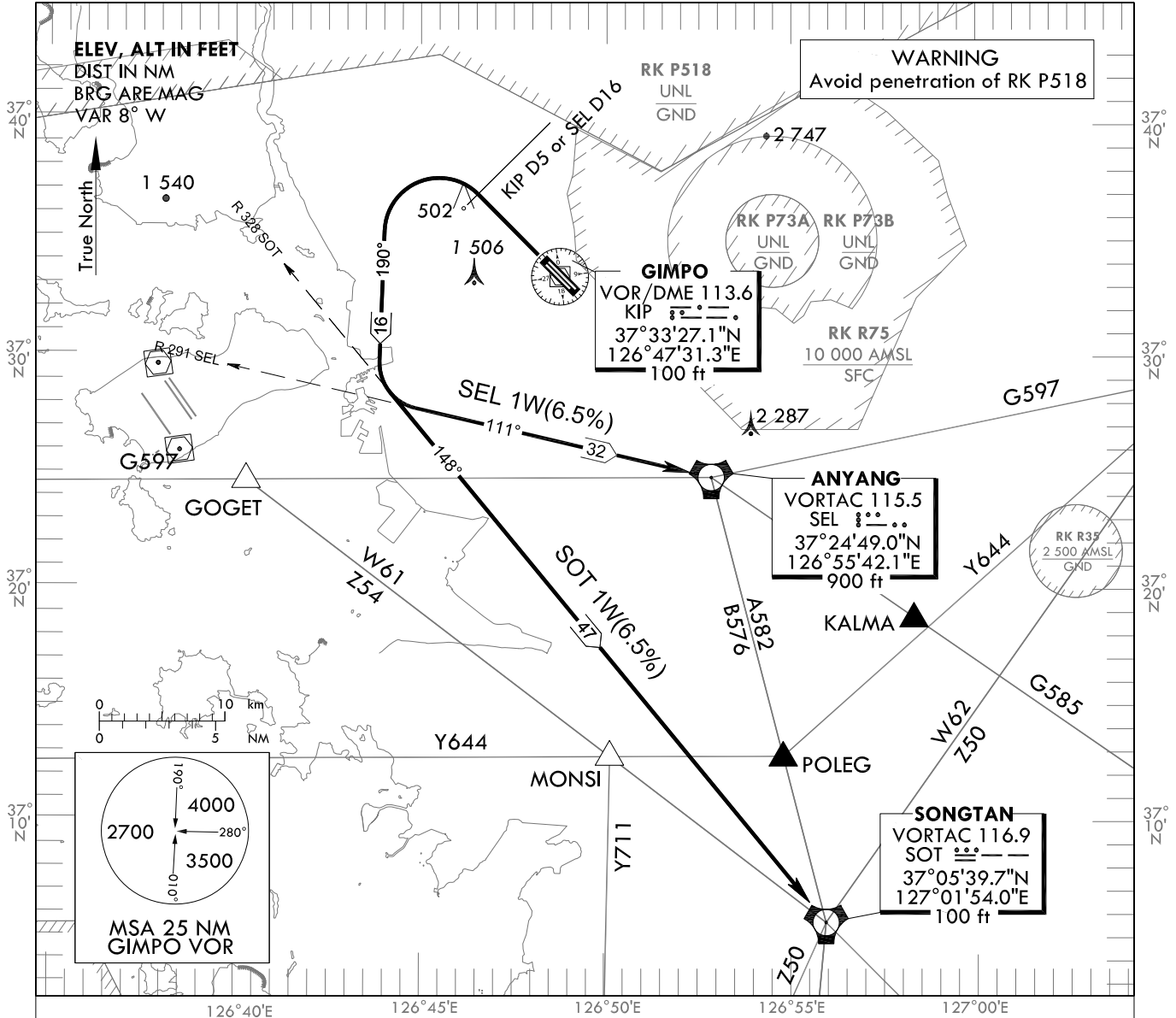
**STANDARD DEPARTURE CHART
INSTRUMENT (SID) - ICAO**

TRANSITION ALT 14 000
TRANSITION LVL FL 140

SEOUL DEP	125.15
	121.4
	124.8
GIMPO TWR	118.1
	118.05

SEOUL/Gimpo Intl(RKSS)
RWY 32L/R
SEL 1W, SOT 1W

Note : Departure under ICAO Flight Procedures.



GENERAL INFORMATION

1. 6.5% CG necessary for Airspace and ATC purpose and 4.9% for avoiding OBST.
2. If unable to comply with flight restrictions, advise ATC well before departure.
3. Stepped climb : Due to interaction with other routes. Do not climb above 4 000 ft unless cleared by ATC.
4. First turn limited maximum 250 kt IAS.
5. All of turns are based on 25 degrees bank angle due to airspace restriction.

SEL(ANYANG) ONE WHISKY DEPARTURE

Climb on R 323 KIP/D5, then turn LEFT to intercept R 291 SEL and cross R 291 SEL/D8 then proceed to SEL. Maintain 4 000 ft until instructed by ATC.

SOT(SONGTAN) ONE WHISKY DEPARTURE

Climb on R 323 KIP/D5, then turn LEFT to intercept R 328 SOT and cross R 328 SOT/D25 then Proceed to SOT. Maintain 4 000 ft until instructed by ATC.

Change : Page control.

INTENTIONALLY

LEFT

BLANK

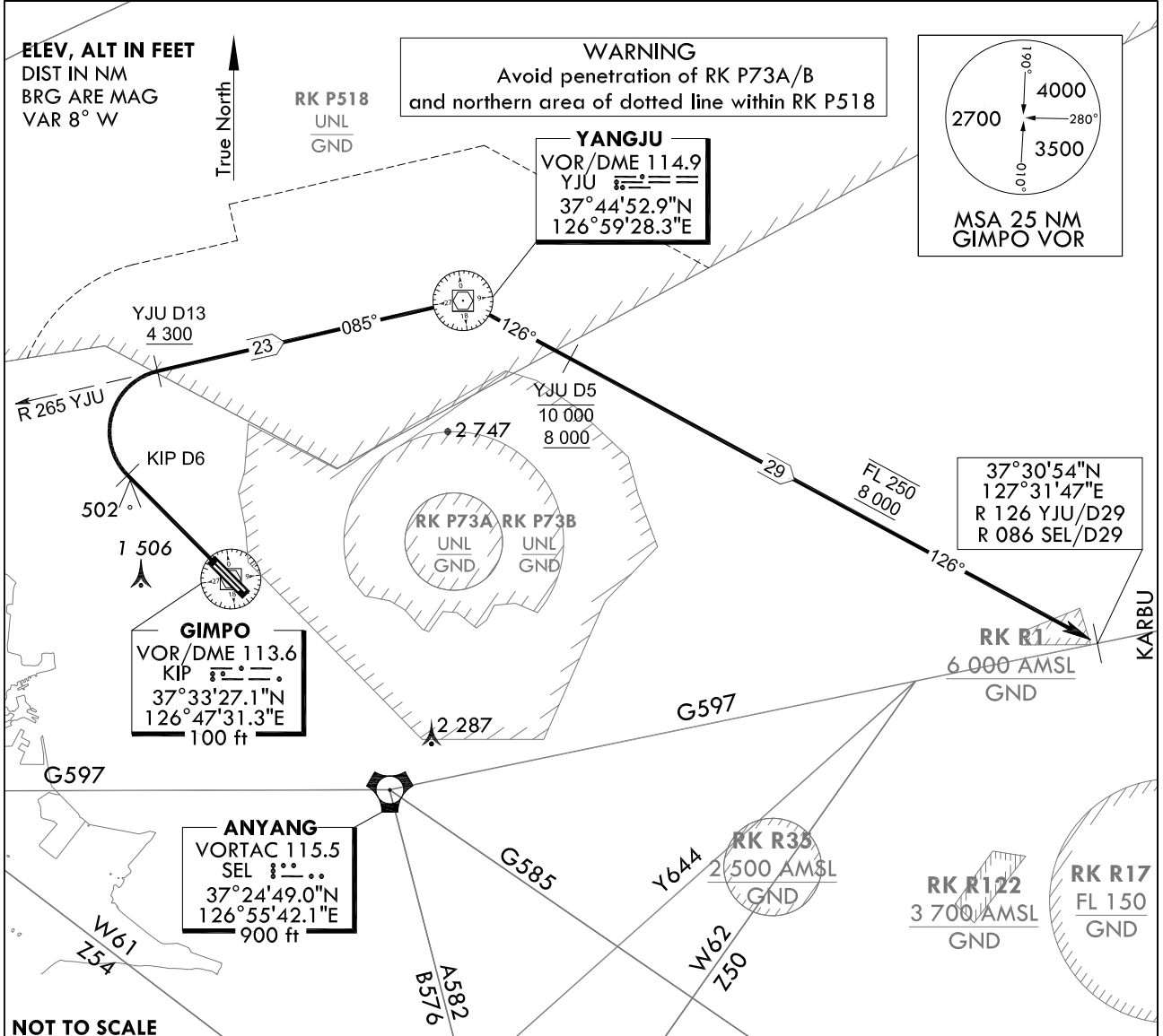
STANDARD DEPARTURE CHART
INSTRUMENT (SID) - ICAO

TRANSITION ALT 14 000
TRANSITION LVL FL 140

SEOUL DEP	125.15
	121.4
	124.8
GIMPO TWR	118.1
	118.05

SEOUL/Gimpo Intl(RKSS)
RWY 32L/R
KARBU 1W

Note : Departure under ICAO Flight Procedures.



NOTE

1. Minimum CG 7% to 4 300 ft for noise abatement, then resume normal CG.
2. Request of this procedure shall be made at least 10 minutes prior to take-off.
3. Operating Hours
 - SAT, SUN and Holiday : 0300 - 1200 UTC
 - Other days : 0700 - 1200 UTC

KARBU ONE WHISKY DEPARTURE :

Climb on R 323 KIP to D6, then turn right to intercept R 265 YJU/D13, then proceed to YJU.
At YJU, turn right to track outbound R 126 YJU until joining G597.
Cross R 265 YJU/D13 at or above 4 300 ft, R 126 YJU/D5 between 8 000 ft and 10 000 ft,
then at or below FL 250 until joining G597.

INTENTIONALLY

LEFT

BLANK

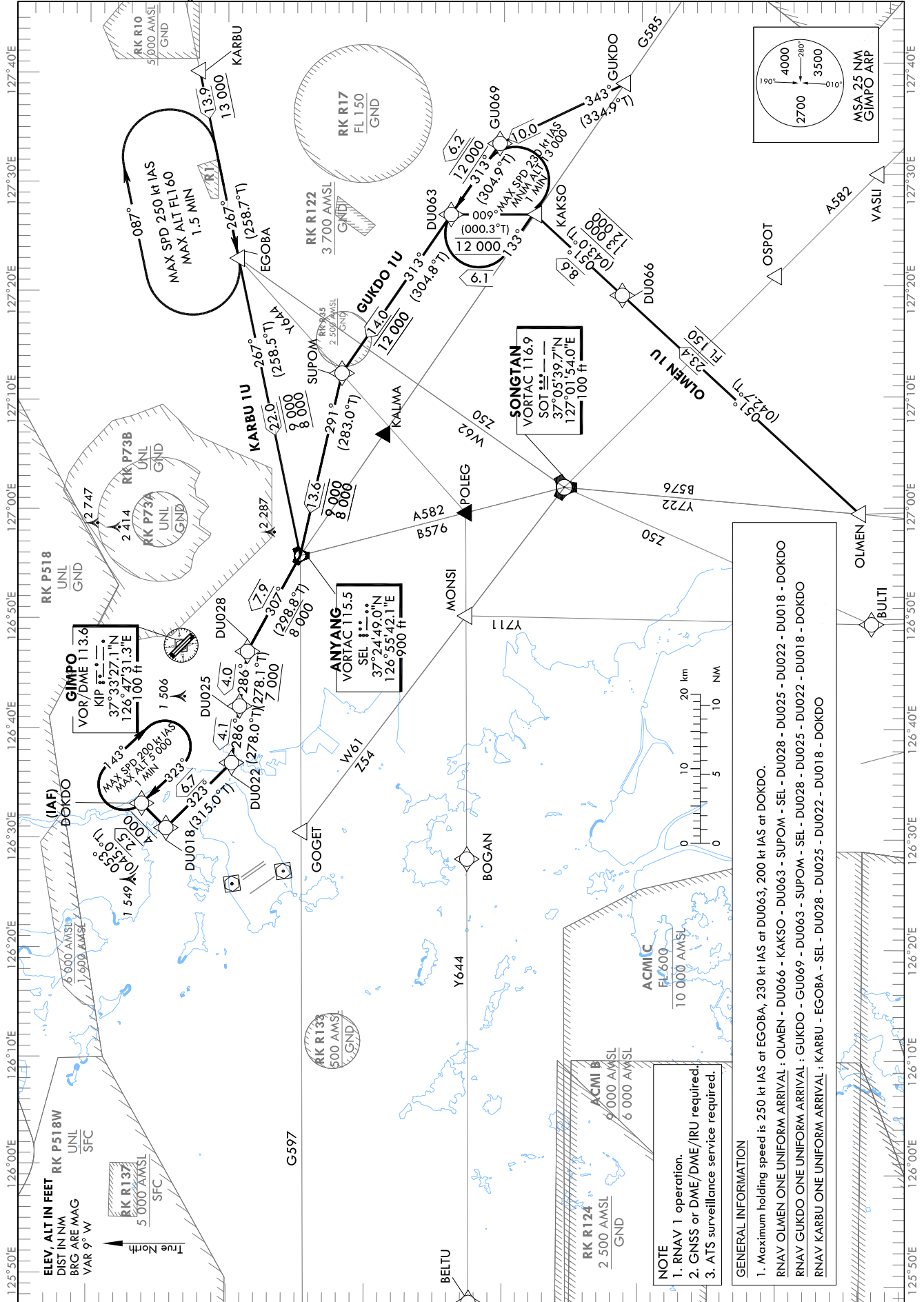
STANDARD ARRIVAL CHART
INSTRUMENT (STAR) - ICAO

TRANSITION ALT 14 000
TRANSITION LVL FL 140

SEOUL APP 119.75
119.1
GIMPO TWR 118.1
118.05

SEOUL/Gimpo Intl(RKSS)
RWY 14L/R
RNAV OLMEN 1U
RNAV GUKDO 1U, RNAV KARBU 1U

Note : Arrival under ICAO Flight Procedure.



Change : New procedure.

SEOUL/Gimpo Intl(RKSS)
RWY 14L/R
RNAV OLMEN 1U, RNAV GUKDO 1U

AERONAUTICAL DATA TABULATION

Standard Instrument Arrival Procedure Coding Tables

RNAV OLMEN 1U												
Serial Number	Path Descriptor	Waypoint Identifier	Fly-over	Course/Track °M(°T)	Distance (NM)	Turn direction	Altitude (ft)	Speed (kt)	Coordinates	VPA/RDH	Navigation specification	Remarks
001	IF	OLMEN	-	-	-	-	-	-	36°44'13.4"N 126°59'27.6"E	-	RNAV 1	-
002	TF	DU066	-	051 (042.7)	23.4	-	@FL 150	-	37°01'25.6"N 127°19'16.4"E	-	RNAV 1	-
003	TF	KAKSO	-	051 (043.0)	8.6	-	-13 000 +12 000	-250	37°07'44.6"N 127°26'37.4"E	-	RNAV 1	Bank angle 25°
004	TF	DU063	-	009 (000.3)	6.1	-	@12 000	-250	37°13'49.2"N 127°26'39.5"E	-	RNAV 1	Bank angle 25°
005	TF	SUPOM	-	313 (304.8)	14.0	-	@12 000	-	37°21'46.7"N 127°12'17.2"E	-	RNAV 1	-
006	TF	SEL	-	291 (283.0)	13.6	-	-9 000 +8 000	-	37°24'49.0"N 126°55'42.1"E	-	RNAV 1	-
007	TF	DU028	-	307 (298.8)	7.9	-	-8 000	-	37°28'38.4"N 126°46'58.6"E	-	RNAV 1	-
008	TF	DU025	-	286 (278.1)	4.0	-	+7 000	-	37°29'12.0"N 126°42'00.0"E	-	RNAV 1	-
009	TF	DU022	-	286 (278.0)	4.1	-	-	-	37°29'46.6"N 126°36'50.4"E	-	RNAV 1	-
010	TF	DU018	-	323 (315.0)	6.7	-	-	-220	37°34'30.9"N 126°30'53.6"E	-	RNAV 1	-
011	TF	DOKDO	-	053 (045.0)	2.5	-	+4 000	-220	37°36'17.1"N 126°33'07.1"E	-	RNAV 1	IAF

RNAV GUKDO 1U												
Serial Number	Path Descriptor	Waypoint Identifier	Fly-over	Course/Track °M(°T)	Distance (NM)	Turn direction	Altitude (ft)	Speed (kt)	Coordinates	VPA/RDH	Navigation specification	Remarks
001	IF	GUKDO	-	-	-	-	-	-	37°01'10.9"N 127°38'22.6"E	-	RNAV 1	-
002	TF	GU069	-	343 (334.9)	10.0	-	-	-	37°10'14.9"N 127°33'04.6"E	-	RNAV 1	-
003	TF	DU063	-	313 (304.9)	6.2	-	@12 000	-	37°13'49.2"N 127°26'39.5"E	-	RNAV 1	-
004	TF	SUPOM	-	313 (304.8)	14.0	-	@12 000	-	37°21'46.7"N 127°12'17.2"E	-	RNAV 1	-
005	TF	SEL	-	291 (283.0)	13.6	-	-9 000 +8 000	-	37°24'49.0"N 126°55'42.1"E	-	RNAV 1	-
006	TF	DU028	-	307 (298.8)	7.9	-	-8 000	-	37°28'38.4"N 126°46'58.6"E	-	RNAV 1	-
007	TF	DU025	-	286 (278.1)	4.0	-	+7 000	-	37°29'12.0"N 126°42'00.0"E	-	RNAV 1	-
008	TF	DU022	-	286 (278.0)	4.1	-	-	-	37°29'46.6"N 126°36'50.4"E	-	RNAV 1	-
009	TF	DU018	-	323 (315.0)	6.7	-	-	-220	37°34'30.9"N 126°30'53.6"E	-	RNAV 1	-
010	TF	DOKDO	-	053 (045.0)	2.5	-	+4 000	-220	37°36'17.1"N 126°33'07.1"E	-	RNAV 1	IAF

Change : New procedure.

SEOUL/Gimpo Intl(RKSS)
RWY 14L/R
RNAV KARBU 1U

AERONAUTICAL DATA TABULATION

Standard Instrument Arrival Procedure Coding Tables

Serial Number	Path Descriptor	Waypoint Identifier	Fly-over	Course/Track °M(°T)	Distance (NM)	Turn direction	Altitude (ft)	Speed (kt)	Coordinates	VPA/ RDH	Navigation specification	Remarks
001	IF	KARBU	-	-	-	-	-	-	37°31'59.0"N 127°39'52.0"E	-	RNAV 1	-
002	TF	EGOBA	-	267 (258.7)	13.9	-	+13 000	-	37°29'14.7"N 127°22'45.9"E	-	RNAV 1	-
003	TF	SEL	-	267 (258.5)	22.0	-	-9 000 +8 000	-	37°24'49.0"N 126°55'42.1"E	-	RNAV 1	-
004	TF	DU028	-	307 (298.8)	7.9	-	-8 000	-	37°28'38.4"N 126°46'58.6"E	-	RNAV 1	-
005	TF	DU025	-	286 (278.1)	4.0	-	+7 000	-	37°29'12.0"N 126°42'00.0"E	-	RNAV 1	-
006	TF	DU022	-	286 (278.0)	4.1	-	-	-	37°29'46.6"N 126°36'50.4"E	-	RNAV 1	-
007	TF	DU018	-	323 (315.0)	6.7	-	-	-220	37°34'30.9"N 126°30'53.6"E	-	RNAV 1	-
008	TF	DOKDO	-	053 (045.0)	2.5	-	+4 000	-220	37°36'17.1"N 126°33'07.1"E	-	RNAV 1	IAF

RNAV KARBU 1U

Holding Identification	Path Descriptor	Waypoint Identifier	Fly-over	Course/Track °M(°T)	Distance (NM)	Time (min)	Turn direction	Altitude (ft)	Speed (kt)	Coordinates	VPA/ RDH	Navigation specification	Remarks
RNAV OLIMEN 1U	-	DU063	Y	313 (304.9)	1.0	1.0	L	+13 000	-230	37°13'49.2"N 127°26'39.5"E	-	RNAV 1	-
	-	DOKDO	Y	323 (314.9)	1.0	1.0	R	-5 000 +4 000	-200	37°36'17.1"N 126°33'07.1"E	-	RNAV 1	-
RNAV GUKDO 1U	-	DU063	Y	313 (304.9)	1.0	1.0	L	+13 000	-230	37°13'49.2"N 127°26'39.5"E	-	RNAV 1	-
	-	DOKDO	Y	323 (314.9)	1.0	1.0	R	-5 000 +4 000	-200	37°36'17.1"N 126°33'07.1"E	-	RNAV 1	-
RNAV KARBU 1U	-	EGOBA	Y	267 (258.7)	1.5	1.5	R	-FL 160	-250	37°29'14.7"N 127°22'45.9"E	-	RNAV 1	-
	-	DOKDO	Y	323 (314.9)	1.0	1.0	R	-5 000 +4 000	-200	37°36'17.1"N 126°33'07.1"E	-	RNAV 1	-

HOLDING PROCEDURE

Change : New procedure.

INTENTIONALLY

LEFT

BLANK